

# 2024 Bond Program Consideration

## Dallas Animal Services New Shelter and Adoption Center

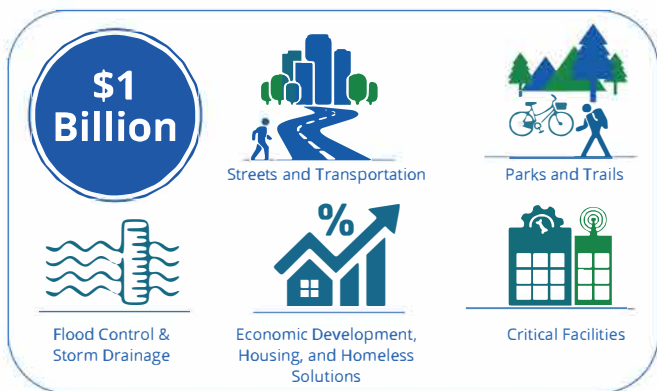
DAS will brief the Critical Facilities Subcommittee on August 15, 2023 with a presentation on a new shelter and adoption center for consideration in the 2024 Bond Program Package.

### What is the 2024 Bond Program?

**In May 2024, Dallas residents will consider a \$1 Billion Capital Bond Program.**

If approved by voters, the City issued debt will support key infrastructure projects in five categories.

There is no recommended increase in the City's tax rate to support the 2024 Capital Bond Program.



DAS falls under Critical Facilities, along with:

- Public Safety
- Libraries
- Cultural and City Facilities

### Dallas Animal Services' Vision

**In 2018, the Dallas90 vision was established to lead the nation in compassionate care of animals and find positive outcomes for all placeable pets via innovative shelter operations and community engagement.**

The condition and size of our current animal services facility, constructed in 2006, hinders our ability to meet the visions we set in place five years ago.

Primarily designed for animal control/housing rather than a well-flowing, inviting adoption center for visitors and staff, the current facility:

- Shows wear on materials/equipment
- Has issues with disease control
- Poorly facilitates separation of sick/healthy animals
- Inadequate space to show and interact with adoptable pets

DAS is requesting a new, larger animal shelter and adoption center constructed on a new site centrally located within the City of Dallas to support the adoption of the 400+ animals housed at our current facility.

### Community Bond Task Force

**The CBTF assists the City Manager, Mayor and City Council in reviewing and selecting 2024 Capital Bond Program projects.**

The Subcommittees will assist the CBTF and staff to identify citywide and district specific projects for each proposition.

The CBTF and Subcommittees will meet May 11 through August 22.

All meetings will be open to the public and meeting agendas, dates, and locations will be available on the Office of Bond and Construction Management Website via [dallascityhall.com](http://dallascityhall.com)

### Subcommittee Focus Areas



# Frequently Asked Questions



## How will this new shelter help increase adoptions and help more people keep their pets? How will it make residents better pet owners?

A new, progressive shelter designed with the appropriate flow infrastructure will help save placeable pets by:

- Mitigating illness and reducing barriers through flex spacing
- Providing a space for community services, support, recommendations, and engagement
- Reducing the likelihood of pet relinquishment through maximizing life-saving programs

We can make a more effective and engaging environment that offers space for supportive services and community programs; a significant impact on the well-being of pets and the community. Having a larger facility that draws in more community members, supports pet owners, and helps lost pets find their way home will help make residents better pet owners.

## Can you open more small satellite adoption or retail facilities in other parts of Dallas?

Ensuring a quality facility for pets, staff, and the community is DAS' number one goal. Our current facility does not allow for upwards or outwards expansion.

While satellite facilities are something we aspire to have in the future, focusing on a larger space that allows for quality care and services without increased staffing is our present focus.

DAS partnered and parted with Petsmart as a retail location after the program declined following Covid. This was not DAS' decision; however, it has allowed us to explore a variety of retail locations throughout DFW to expand our reach without the burden of staffing an offsite location fulltime.



## How many more animals will be saved? Will a new facility increase the number of parking spaces?

DAS is committed to the BeDallas90 vision of compassionate care and positive outcomes for placeable pets through innovative operations and community engagement. We currently house over 400+ pets and are working hard in the following areas to save more with a larger facility:

- **Create** more opportunities for owners to maximize lifesaving through resources so they can keep their pets
- **Implement** a lost and found platform that maximizes the reunification of lost pets with their owners, reducing the number of pets throughout the shelter
- **Build** strong relationships with our rescue partners to transfer more pets and increase our transport opportunities
- **Continue growing** our reach of positive placements

Increasing the number of parking spaces will be considered during development. Sufficient parking availability improves convenience for visitors, leading to increased traffic and adoptions.

## Most animals come from a certain part of town; my neighborhood does not have lost pets or cruelty cases, why should we pay for this?

DAS takes in pets and has partnered on cruelty cases from every neighborhood in Dallas. Tax dollars are typically allocated based on the collective needs of a community and the animal welfare in Dallas is a collective responsibility that extends beyond specific geographical boundaries.

Different neighborhoods may have varying approaches to addressing pet owner needs. Investing in a larger space will provide societal benefits and potential long-term cost savings. It will also allow room for cruelty cases, flex spaces, wildlife, and a private clinic; all of which can have positive impacts on the welfare of both humans and animals alike.



## This facility was only built 15 years ago - How do we know a new one won't become obsolete quickly?

DAS envisions a bigger, better, and smarter facility that incorporates flexibility, scalability, and adaptability. A progressive design and management approach can help future-proof the facility to a great extent.

By remaining proactive, responsive to community needs, and open to ongoing improvements, a new facility can have a longer lifespan and better serve the needs of the shelter and the community.

## If funded, will this take money away from libraries and Parks? Will this take money away from Police and Fire facilities?

**No.** The City maintains an Infrastructure Needs Inventory List of costs for future capital projects based upon :

- Maintenance records and Master Plans
- Residents input and City Council recommendations

Ranking and prioritization of projects is conducted through a Technical Criteria Process developed by designated subject matter experts in each Infrastructure Department, taking into consideration City policy and/or initiative. Afterwards, a recommended list of capital projects is vetted through the City's various Committees before finalizing. \*The Community Taskforce will provide feedback throughout the process before finalizing a list of projects to City Council.

